



www.Source1Parts.com

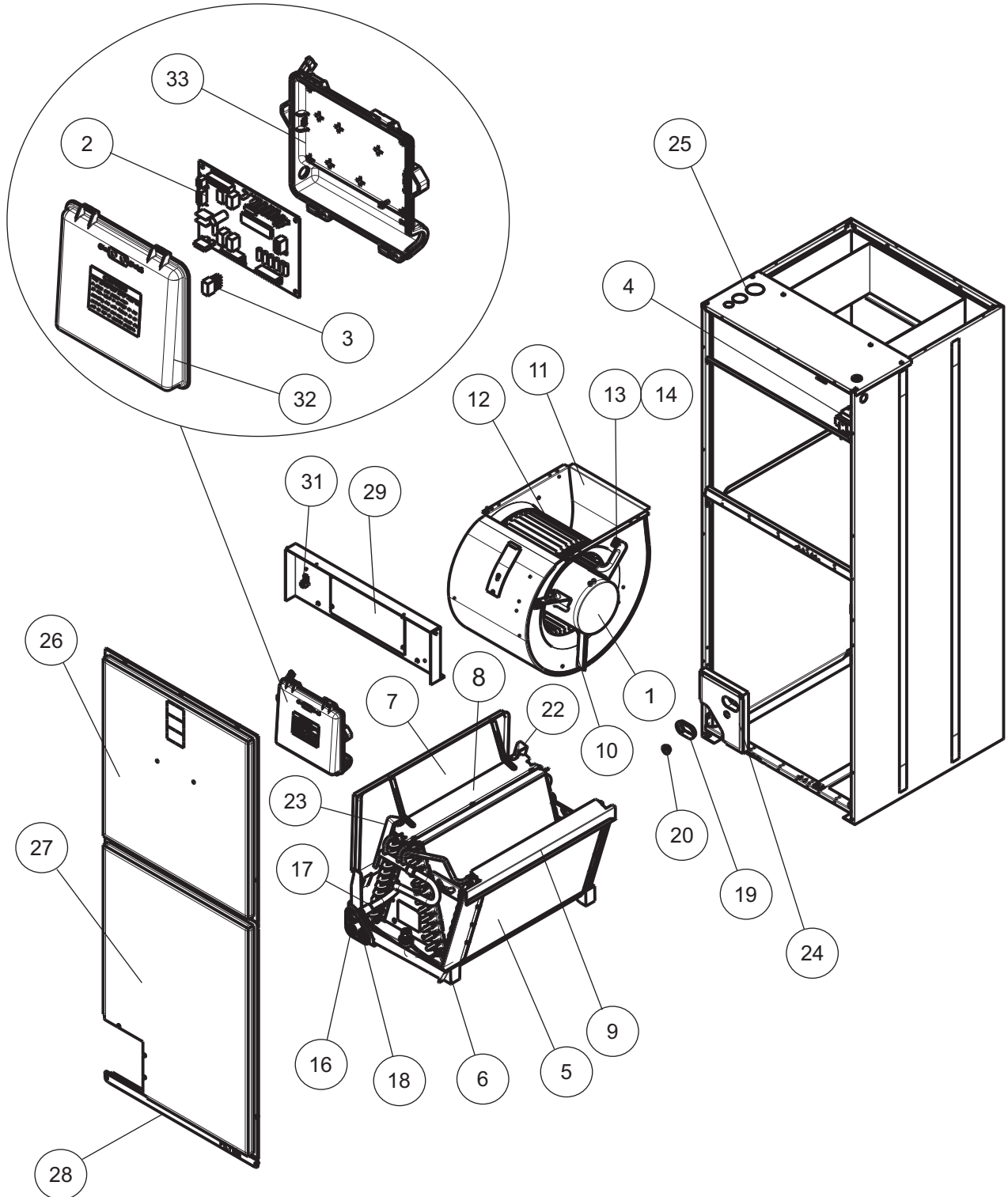
HVAC SERVICE PARTS

# AVC SERIES SINGLE PIECE AIR HANDLER PREM ECM MOTORS, FLEX COIL MODELS GEN 1 (STYLE B)

Supersedes:035-24586-001 Rev. B (0216)

035-24586-001 Rev. C (1016)

1 of 4



ITEM	DESCRIPTION	AVC18BX21B	AVC24BX21B	AVC30BX21B	AVC36BX21B
1A	Blower Motor, Prem ECM (Prgm)	S1-32436072491	S1-32436072492	S1-32436072493	S1-32436073494
1B	Module, Motor Control (Prgm)	S1-32436078491	S1-32436078492	S1-32436078493	S1-32436079494
1C	Motor, ECM (Motor only, (Unprgm)	S1-02436072000	S1-02436072000	S1-02436072000	S1-02436073000
1D	Module, Motor Control (Unprgm)	S1-02436078000	S1-02436078000	S1-02436078000	S1-02436079000
2	Board, Control	S1-33103496000	S1-33103496000	S1-33103496000	S1-33103496000
3	Plug ID	S1-02544148000	S1-02544149000	S1-02544150000	S1-02547278000
4	Transformer	S1-02518452700	S1-02518452700	S1-02518452700	S1-02518452700
5	Coil, Flex (w/drain pan)	S1-37339405006	S1-37339405008	S1-37339405014	S1-37339405018
6	Drain Pan, Vertical	S1-02817091000	S1-02817091000	S1-02817091000	S1-02817091000
7	Drain Pan, Horizontal	S1-37339404001	S1-37339404001	S1-37339404003	S1-37339404005
8	Baffle, Coil	S1-37339407003	S1-37339407003	S1-37339407002	S1-37339407002
9	Shield, Blow-Off	S1-07339408001	S1-07339408001	S1-07339408001	S1-07339408001
10	Kit, Motor Mount	S1-32631480000	S1-32631480000	S1-32631480000	S1-32631480000
11	Housing, Blower	S1-37327931001	S1-37327931002	S1-37327931001	S1-37327931002
12	Wheel, Blower	S1-02634005000	S1-02634005000	S1-02634005000	S1-02634005000
13	Rubber Isolator, Motor Mount (3 Req'd)	S1-02809412003	S1-02809412003	S1-02809412003	S1-02809412003
14	Steel Sleeve, Motor Mount (3 Req'd)	S1-02809412001	S1-02809412001	S1-02809412001	S1-02809412001
15*	Harness, Wiring (ECM)	S1-02546389000	S1-02546389000	S1-02546389000	S1-02546389000
16	Plug, Drain Pan (2 Req'd)	<b>S1-02812480001</b>	<b>S1-02812480001</b>	<b>S1-02812480001</b>	<b>S1-02812480001</b>
17	Line, Liquid	S1-02322464000	S1-02322464000	S1-02322465000	S1-02322465000
18	Gasket, Drain Pan	S1-02817104000	S1-02817104000	S1-02817104000	S1-02817104000
19	Grommet, Oval	S1-02817078001	S1-02817077001	S1-02817077001	S1-02817077001
20	Grommet, 3/8"	S1-02813209000	S1-02813209000	S1-02813209000	S1-02813209000
21*	Gasket, Door	S1-02817061000	S1-02817061000	S1-02817061000	S1-02817061000
22	Channel, Condensate, Rear	S1-02817103000	S1-02817103000	S1-02817103000	S1-02817103000
23	Channel, Condensate, Front	S1-02817102000	S1-02817102000	S1-02817102000	S1-02817102000
24	Panel, Tubing Access	S1-37339403001	S1-37339403001	S1-37339403001	S1-37339403001
25	Top, Panel	S1-37339409001	S1-37339409001	S1-37339409001	S1-37339409001
26	Assy, Top Door	S1-37339410001	S1-37339410001	S1-37339410001	S1-37339410001
27	Assy, Bottom Door	S1-37339402004	S1-37339402004	S1-37339402004	S1-37339402004
28	Assy, Filter Door	S1-37339411001	S1-37339411001	S1-37339411001	S1-37339411001
29	Cover, Heat	S1-07339412001	S1-07339412001	S1-07339412001	S1-07339412001
30*	Harness, Wiring (Power)	S1-02544147000	S1-02544147000	S1-02544147000	S1-02544147000
31	Lug, Ground	S1-02521798000	S1-02521798000	S1-02521798000	S1-02521798000
32	Box, Control, Top	S1-02545232000	S1-02545232000	S1-02545232000	S1-02545232000
33	Box, Control, Bottom	S1-02545233000	S1-02545233000	S1-02545233000	S1-02545233000
34	Screw, Slotted (3 Req'd)	S1-02117174000	S1-02117174000	S1-02117174000	S1-02117174000
35	Washer, Neoprene (3 Req'd)	S1-02809412002	S1-02809412002	S1-02809412002	S1-02809412002
36*	Wiring Diagram	5009096	5009096	5009096	5009096

&lt;

**NOTE:** \*Not ShownNew replacement parts shown in **bold** face type at the first printing of parts list dated 10/16.

Major components and suggested stocking items are shown with shaded item number.

"←" Across from row indicates a change in that row, changed part numbers are in red.

--- Not applicable to specified model.

ITEM	DESCRIPTION	AVC36CX21B	AVC42CX21B	AVC48CX21B	AVC48DX21B
1A	Blower Motor, Prem ECM (Prgm)	S1-32436073495	S1-32436073496	S1-32436074497	S1-32436074499
1B	Module, Motor Control (Prgm)	S1-32436079495	S1-32436079496	S1-32436080497	S1-32436080499
1C	Motor, ECM (Motor only, (Unprgm)	S1-02436073000	S1-02436073000	S1-02436074000	S1-02436074000
1D	Module, Motor Control (Unprgm)	S1-02436079000	S1-02436079000	S1-02436080000	S1-02436080000
2	Board, Control	S1-33103496000	S1-33103496000	S1-33103496000	S1-33103496000
3	Plug ID	S1-02544151000	S1-02544152000	S1-02547277000	S1-02544153000
4	Transformer	S1-02518452700	S1-02518452700	S1-02518452700	S1-02518452700
5	Coil, Flex (w/drain pan)	S1-37339405019	S1-37339405024	S1-37339405024	S1-37339405025
6	Drain Pan, Vertical	S1-02817092000	S1-02817092000	S1-02817092000	S1-02817093000
7	Drain Pan, Horizontal	S1-37339404011	S1-37339404009	S1-37339404009	S1-37339404009
8	Baffle, Coil	S1-37339407003	S1-37339407002	S1-37339407002	S1-37339407003
9	Shield, Blow-Off	S1-07339408001	S1-07339408001	S1-07339408001	S1-07339408001
10	Kit, Motor Mount	S1-32631459000	S1-32631459000	S1-32631459000	S1-32631459000
11	Housing, Blower	S1-37327931003	S1-37327931003	S1-37327931003	S1-37327931003
12	Wheel, Blower	S1-02634501000	S1-02634501000	S1-02634501000	S1-02634501000
13	Rubber Isolator, Motor Mount (3 Req'd)	S1-02809412003	S1-02809412003	S1-02809412003	S1-02809412003
14	Steel Sleeve, Motor Mount (3 Req'd)	S1-02809412001	S1-02809412001	S1-02809412001	S1-02809412001
15*	Harness, Wiring (ECM)	S1-02546389000	S1-02546389000	S1-02546389000	S1-02546389000
16	Plug, Drain Pan (2 Req'd)	<b>S1-02812480001</b>	<b>S1-02812480001</b>	<b>S1-02812480001</b>	<b>S1-02812480001</b>
17	Line, Liquid	S1-02322470000	S1-02322470000	S1-02322470000	S1-02322463000
18	Gasket, Drain Pan	S1-02817104000	S1-02817104000	S1-02817104000	S1-02817104000
19	Grommet, Oval	S1-02817077001	S1-02817077001	S1-02817077001	S1-02817077001
20	Grommet, 3/8"	S1-02813209000	S1-02813209000	S1-02813209000	S1-02813209000
21*	Gasket, Door	S1-02817061000	S1-02817061000	S1-02817061000	S1-02817061000
22	Channel, Condensate, Rear	S1-02817103000	S1-02817103000	S1-02817103000	S1-02817103000
23	Channel, Condensate, Front	S1-02817102000	S1-02817102000	S1-02817102000	S1-02817102000
24	Panel, Tubing Access	S1-37339403001	S1-37339403001	S1-37339403001	S1-37339403001
25	Top, Panel	S1-37339409002	S1-37339409002	S1-37339409002	S1-37339409003
26	Assy, Top Door	S1-37339410002	S1-37339410002	S1-37339410002	S1-37339410003
27	Assy, Bottom Door	S1-37339402012	S1-37339402012	S1-37339402012	S1-37339402005
28	Assy, Filter Door	S1-37339411002	S1-37339411002	S1-37339411002	S1-37339411003
29	Cover, Heat	S1-07339412001	S1-07339412001	S1-07339412001	S1-07339412001
30*	Harness, Wiring (Power)	S1-02544147000	S1-02544147000	S1-02544147000	S1-02544147000
31	Lug, Ground	S1-02521798000	S1-02521798000	S1-02521798000	S1-02521798000
32	Box, Control, Top	S1-02545232000	S1-02545232000	S1-02545232000	S1-02545232000
33	Box, Control, Bottom	S1-02545233000	S1-02545233000	S1-02545233000	S1-02545233000
34	Screw, Slotted (3 Req'd)	S1-02117174000	S1-02117174000	S1-02117174000	S1-02117174000
35	Washer, Neoprene (3 Req'd)	S1-02809412002	S1-02809412002	S1-02809412002	S1-02809412002
36*	Wiring Diagram	5009096	5009096	5009096	5009096

**NOTE:** \*Not Shown  
New replacement parts shown in **bold** face type at the first printing of parts list dated 10/16.  
Major components and suggested stocking items are shown with shaded item number.  
"←" Across from row indicates a change in that row, changed part numbers are in red.  
--- Not applicable to specified model.

ITEM	DESCRIPTION	AVC60CX21B	AVC60DX21B	
1A	Blower Motor, Prem ECM (Prgm)	S1-32436074498	S1-32436074505	<
1B	Module, Motor Control (Prgm)	S1-32436080498	S1-32436080505	
1C	Motor, ECM (Motor only, (Unprgm)	S1-02436074000	S1-02436074000	
1D	Module, Motor Control (Unprgrm)	S1-02436080000	S1-02436080000	
2	Board, Control	S1-33103496000	S1-33103496000	
3	Plug ID	S1-02547276000	S1-02544154000	
4	Transformer	S1-02518452700	S1-02518452700	
5	Coil, Flex (w/drain pan)	S1-37339405001	S1-37339405026	
6	Drain Pan, Vertical	S1-02817092000	S1-02817095000	
7	Drain Pan, Horizontal	S1-37339404010	S1-37339404010	
8	Baffle, Coil	S1-37339407002	S1-37339407002	
9	Shield, Blow-Off	S1-07339408001	S1-07339408001	
10	Kit, Motor Mount	S1-32631459000	S1-32631459000	
11	Housing, Blower	S1-37327931003	S1-37327931003	
12	Wheel, Blower	S1-02634501000	S1-02634501000	
13	Rubber Isolator, Motor Mount (3 Req'd)	S1-02809412003	S1-02809412003	
14	Steel Sleeve, Motor Mount (3 Req'd)	S1-02809412001	S1-02809412001	
15*	Harness, Wiring (ECM)	S1-02546389000	S1-02546389000	
16	Plug, Drain Pan (2 Req'd)	<b>S1-02812480001</b>	<b>S1-02812480001</b>	<
17	Line, Liquid	S1-02322470000	S1-02322463000	
18	Gasket, Drain Pan	S1-02817104000	S1-02817104000	
19	Grommet, Oval	<b>S1-02817077001</b>	<b>S1-02817077001</b>	<
20	Grommet, 3/8"	S1-02813209000	S1-02813209000	
21*	Gasket, Door	S1-02817061000	S1-02817061000	
22	Channel, Condensate, Rear	S1-02817103000	S1-02817103000	
23	Channel, Condensate, Front	S1-02817102000	S1-02817102000	
24	Panel, Tubing Access	S1-37339403001	S1-37339403001	
25	Top, Panel	S1-37339409002	S1-37339409003	
26	Assy, Top Door	S1-37339410002	S1-37339410003	
27	Assy, Bottom Door	S1-37339402011	S1-37339402005	
28	Assy, Filter Door	S1-37339411002	S1-37339411003	
29	Cover, Heat	S1-07339412001	S1-07339412001	
30*	Harness, Wiring (Power)	S1-02544147000	S1-02544147000	
31	Lug, Ground	S1-02521798000	S1-02521798000	
32	Box, Control, Top	S1-02545232000	S1-02545232000	
33	Box, Control, Bottom	S1-02545233000	S1-02545233000	
34	Screw, Slotted (3 Req'd)	S1-02117174000	S1-02117174000	
35	Washer, Neoprene (3 Req'd)	S1-02809412002	S1-02809412002	
36*	Wiring Diagram	5009096	5009096	

**NOTE:** \*Not Shown

New replacement parts shown in **bold** face type at the first printing of parts list dated 10/16.

Major components and suggested stocking items are shown with shaded item number.

"<" Across from row indicates a change in that row, changed part numbers are in red.

--- Not applicable to specified model.

**TO ORDER AUTHORIZED FACTORY REPLACEMENT PARTS** - Contact your Source1 HVAC Parts Distributor or visit our website at **www.Source1Parts.com** for a Distributor and Dealer listing.