



www.Source1Parts.com

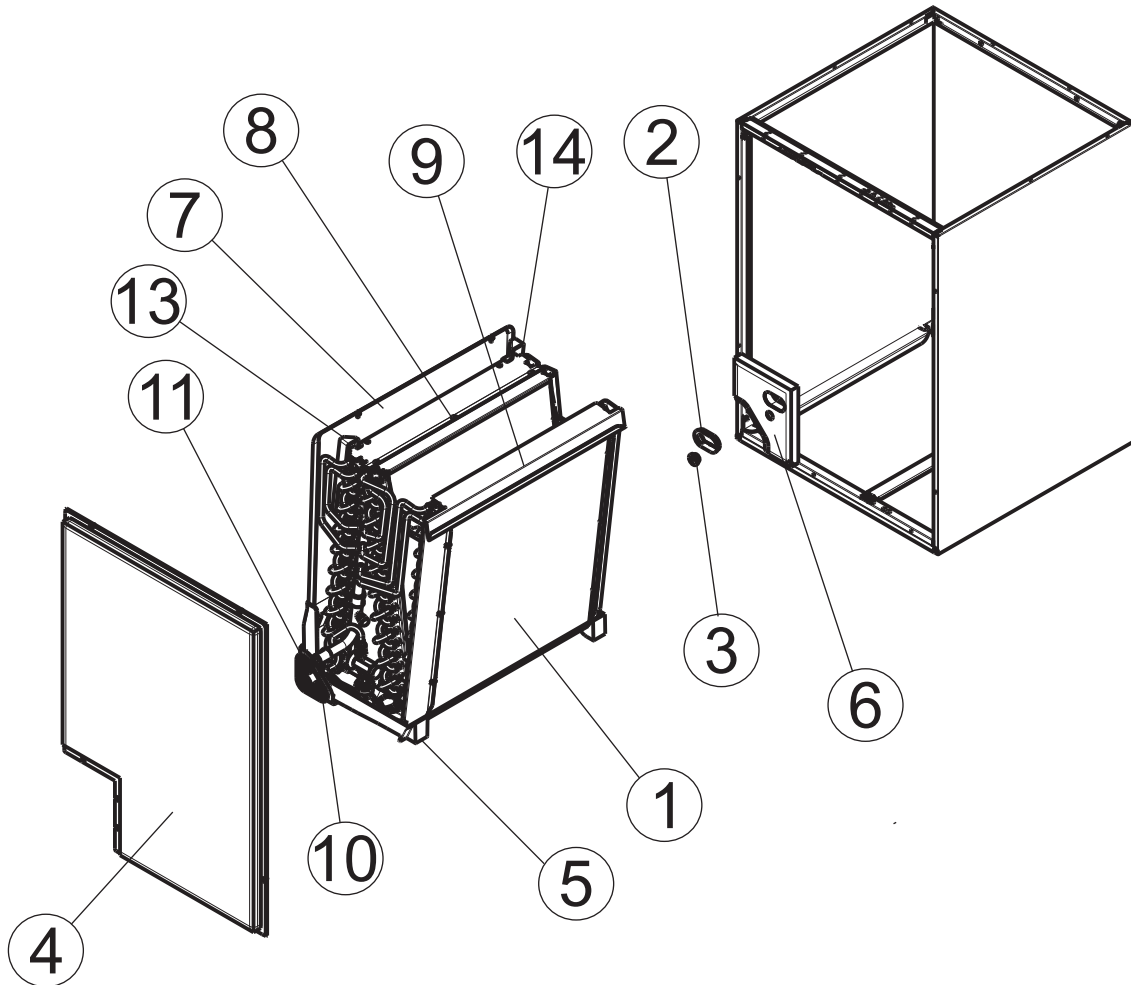
**CM SERIES  
MULTI-POSITION COIL W/HORIZONTAL PAN  
ALUM FLEX COIL MODELS (STYLE C)**

**HVAC SERVICE PARTS**

Supersedes: Nothing

035-26481-001 Rev. A (0617)

1 of 4



**Figure 1 : MULT-POSITION COIL W/HORIZONTAL PAN - ALUM FLEX COIL**

ITEM	DESCRIPTION	CM18AXA1C	CM18BXA1C	CM24AXA1C	CM24BXA1C
1	Coil w/Drain Pan	<b>S1-37339405605</b>	<b>S1-37339405606</b>	<b>S1-37339405607</b>	<b>S1-37339405608</b>
2	Gasket, Oval	S1-02817078002	S1-02817078002	S1-02817077002	S1-02817077002
3	Grommet, Liquid Line	S1-02813209000	S1-02813209000	S1-02813209000	S1-02813209000
4	Assy, Lower Access Panel	S1-37339402001	S1-37339402004	S1-37339402001	S1-37339402004
5	Pan, Drain	S1-02817090000	S1-02817091000	S1-02817090000	S1-02817091000
6	Panel, Tubing Access	S1-37339403001	S1-37339403001	S1-37339403001	S1-37339403001
7	Drain Pan, Horizontal	S1-37339404001	S1-37339404001	S1-37339404002	S1-37339404001
8	Assy, Coil Baffle	S1-37339407002	S1-37339407003	S1-37339407002	S1-37339407003
9	Shield, Blow-off, RH	S1-07339408001	S1-07339408001	S1-07339408001	S1-07339408001
10	Plug, Drain Pan (2 Req'd)	S1-02812480001	S1-02812480001	S1-02812480001	S1-02812480001
11	Gasket, Drain Pan	S1-02817104000	S1-02817104000	S1-02817104000	S1-02817104000
12*	Assy, Liquid Line	S1-02322469000	S1-02322464000	S1-02322469000	S1-02322464000
13	Channel, Condensate, Front	S1-02817102000	S1-02817102000	S1-02817102000	S1-02817102000
14	Channel, Condensate, Rear	S1-02817103000	S1-02817103000	S1-02817103000	S1-02817103000
15*	Retainer, Insulation	---	S1-02925441000	---	S1-02925441000
16*	Gasket, Foam	S1-02817061001	S1-02817061001	S1-02817061001	S1-02817061001

**NOTE:** \*Not Shown

New replacement parts shown in **bold** face type at the first printing of parts list dated 6/17

Major components and suggested stocking items are shown with shaded item number.

"<" Across from row indicates a change in that row. Changes are shown in red.

--- Not applicable to specified model.



ITEM	DESCRIPTION	CM24CXA1C	CM30AXA1C	CM30BXA1C	CM30CXA1C
1	Coil w/Drain Pan	<b>S1-37339405609</b>	<b>S1-37339405613</b>	<b>S1-37339405614</b>	<b>S1-37339405615</b>
2	Gasket, Oval	S1-02817077002	S1-02817077002	S1-02817077002	S1-02817077002
3	Grommet, Liquid Line	S1-02813209000	S1-02813209000	S1-02813209000	S1-02813209000
4	Assy, Lower Access Panel	S1-37339402007	S1-37339402002	S1-37339402005	S1-37339402008
5	Pan, Drain	S1-02817092000	S1-02817090000	S1-02817091000	S1-02817092000
6	Panel, Tubing Access	S1-37339403001	S1-37339403001	S1-37339403001	S1-37339403001
7	Drain Pan, Horizontal	S1-37339404002	S1-37339404004	S1-37339404003	S1-37339404003
8	Assy, Coil Baffle	S1-37339407003	S1-37339407001	S1-37339407002	S1-37339407003
9	Shield, Blow-off, RH	S1-07339408001	S1-07339408001	S1-07339408001	S1-07339408001
10	Plug, Drain Pan (2 Req'd)	S1-02812480001	S1-02812480001	S1-02812480001	S1-02812480001
11	Gasket, Drain Pan	S1-02817104000	S1-02817104000	S1-02817104000	S1-02817104000
12*	Assy, Liquid Line	S1-02322469000	S1-02322471000	S1-02322465000	S1-02322470000
13	Channel, Condensate, Front	S1-02817102000	S1-02817102000	S1-02817102000	S1-02817102000
14	Channel, Condensate, Rear	S1-02817103000	S1-02817103000	S1-02817103000	S1-02817103000
15*	Retainer, Insulation	S1-02925442000	---	S1-02925441000	S1-02925442000
16*	Gasket, Foam	S1-02817061001	S1-02817061001	S1-02817061001	S1-02817061001

<

ITEM	DESCRIPTION	CM30DXA1C	CM36AXA1C	CM36BXA1C	CM36CXA1C
1	Coil w/Drain Pan	<b>S1-37339405616</b>	<b>S1-37339405617</b>	<b>S1-37339405618</b>	<b>S1-37339405619</b>
2	Gasket, Oval	S1-02817077001	S1-02817077001	S1-02817077001	S1-02817077001
3	Grommet, Liquid Line	S1-02813209000	S1-02813209000	S1-02813209000	S1-02813209000
4	Assy, Lower Access Panel	S1-37339402013	S1-37339402002	S1-37339402006	S1-37339402009
5	Pan, Drain	S1-02817093000	S1-02817090000	S1-02817091000	S1-02817092000
6	Panel, Tubing Access	S1-37339403001	S1-37339403001	S1-37339403001	S1-37339403001
7	Drain Pan, Horizontal	S1-37339404003	S1-37339404005	S1-37339404005	S1-37339404011
8	Assy, Coil Baffle	S1-37339407003	S1-37339407001	S1-37339407002	S1-37339407003
9	Shield, Blow-off, RH	S1-07339408001	S1-07339408001	S1-07339408001	S1-07339408001
10	Plug, Drain Pan (2 Req'd)	S1-02812480001	S1-02812480001	S1-02812480001	S1-02812480001
11	Gasket, Drain Pan	S1-02817104000	S1-02817104000	S1-02817104000	S1-02817104000
12*	Assy, Liquid Line	S1-02322463000	S1-02322471000	S1-02322465000	S1-02322470000
13	Channel, Condensate, Front	S1-02817102000	S1-02817102000	S1-02817102000	S1-02817102000
14	Channel, Condensate, Rear	S1-02817103000	S1-02817103000	S1-02817103000	S1-02817103000
15*	Retainer, Insulation	S1-02925443000	---	S1-02925442100	S1-02925442000
16*	Gasket, Foam	S1-02817061001	S1-02817061001	S1-02817061001	S1-02817061001

<

ITEM	DESCRIPTION	CM36DXA1C	CM42CXA1C	CM42DXA1C	CM48CXA1C
1	Coil w/Drain Pan	<b>S1-37339405620</b>	<b>S1-37339405622</b>	<b>S1-37339405623</b>	<b>S1-37339405624</b>
2	Gasket, Oval	S1-02817077001	S1-02817077001	S1-02817077001	S1-02817077001
3	Grommet, Liquid Line	S1-02813209000	S1-02813209000	S1-02813209000	S1-02813209000
4	Assy, Lower Access Panel	S1-37339402013	S1-37339402010	S1-37339402014	S1-37339402011
5	Pan, Drain	S1-02817093000	S1-02817092000	S1-02817093000	S1-02817092000
6	Panel, Tubing Access	S1-37339403001	S1-37339403001	S1-37339403001	S1-37339403001
7	Drain Pan, Horizontal	S1-37339404011	S1-37339404008	S1-37339404008	S1-37339404009
8	Assy, Coil Baffle	S1-37339407003	S1-37339407003	S1-37339407003	S1-37339407002
9	Shield, Blow-off, RH	S1-07339408001	S1-07339408001	S1-07339408001	S1-07339408001
10	Plug, Drain Pan (2 Req'd)	S1-02812480001	S1-02812480001	S1-02812480001	S1-02812480001
11	Gasket, Drain Pan	S1-02817104000	S1-02817104000	S1-02817104000	S1-02817104000
12*	Assy, Liquid Line	S1-02322463000	S1-02322470000	S1-02322463000	S1-02322470000
13	Channel, Condensate, Front	S1-02817102000	S1-02817102000	S1-02817102000	S1-02817102000
14	Channel, Condensate, Rear	S1-02817103000	S1-02817103000	S1-02817103000	S1-02817103000
15*	Retainer, Insulation	S1-02925443000	S1-02925442000	S1-02925443000	S1-02925442000
16*	Gasket, Foam	S1-02817061001	S1-02817061001	S1-02817061001	S1-02817061001

<

**NOTE:** \*Not Shown  
 New replacement parts shown in **bold** face type at the first printing of parts list dated 6/17  
 Major components and suggested stocking items are shown with shaded item number.  
 "<" Across from row indicates a change in that row. Changes are shown in red.  
 --- Not applicable to specified model.



ITEM	DESCRIPTION	CM48DXA1C	CM60CXA1C	CM60DXA1C	
1	Coil w/Drain Pan	<b>S1-37339405625</b>	<b>S1-37339405601</b>	<b>S1-37339405602</b>	<
2	Gasket, Oval	S1-02817077001	S1-02817077001	S1-02817077001	
3	Grommet, Liquid Line	S1-02813209000	S1-02813209000	S1-02813209000	
4	Assy, Lower Access Panel	S1-37339402015	S1-37339402011	S1-37339402015	
5	Pan, Drain	S1-02817093000	S1-02817092000	S1-02817093000	
6	Panel, Tubing Access	S1-37339403001	S1-37339403001	S1-37339403001	
7	Drain Pan, Horizontal	S1-37339404009	S1-37339404010	S1-37339404010	
8	Assy, Coil Baffle	S1-37339407003	S1-37339407002	S1-37339407002	
9	Shield, Blow-off, RH	S1-07339408001	S1-07339408001	S1-07339408001	
10	Plug, Drain Pan (2 Req'd)	S1-02812480001	S1-02812480001	S1-02812480001	
11	Gasket, Drain Pan	S1-02817104000	S1-02817104000	S1-02817104000	
12*	Assy, Liquid Line	S1-02322463000	S1-02322470000	S1-02322463000	
13	Channel, Condensate, Front	S1-02817102000	S1-02817102000	S1-02817102000	
14	Channel, Condensate, Rear	S1-02817103000	S1-02817103000	S1-02817103000	
15*	Retainer, Insulation	S1-02925443000	S1-02925442000	S1-02925443000	
16*	Gasket, Foam	S1-02817061001	S1-02817061001	S1-02817061001	

ITEM	DESCRIPTION	CM64DXA1C	<
1	Coil w/Drain Pan	<b>S1-37339405626</b>	
2	Gasket, Oval	S1-02817077001	
3	Grommet, Liquid Line	S1-02813209000	
4	Assy, Lower Access Panel	S1-37339402015	
5	Pan, Drain	S1-02817095000	
6	Panel, Tubing Access	S1-37339403001	
7	Drain Pan, Horizontal	S1-37339404010	
8	Assy, Coil Baffle	S1-37339407004	
9	Shield, Blow-off, RH	S1-07339408002	
10	Plug, Drain Pan (2 Req'd)	S1-02812480001	
11	Gasket, Drain Pan	S1-02817104000	
12*	Assy, Liquid Line	S1-02322463000	
13	Channel, Condensate, Front	S1-02817102000	
14	Channel, Condensate, Rear	S1-02817103000	
15*	Retainer, Insulation	S1-02925443000	
16*	Gasket, Foam	S1-02817061001	

**NOTE:** \*Not ShownNew replacement parts shown in **bold** face type at the first printing of parts list dated 6/17

Major components and suggested stocking items are shown with shaded item number.

"&lt;" Across from row indicates a change in that row. Changes are shown in red.

--- Not applicable to specified model.

**TO ORDER AUTHORIZED FACTORY REPLACEMENT PARTS** - Contact your Source1 HVAC Parts Distributor or visit our website at **[www.Source1Parts.com](http://www.Source1Parts.com)** for a Distributor and Dealer listing.

Subject to change without notice. Published in U.S.A.  
Copyright © 2017 by Johnson Controls Inc. All rights reserved.

035-26481-001 Rev. A (0617)  
Supersedes: Nothing

---

**York International Corp.**  
**5005 York Drive**  
**Norman, OK 73069**